

# LAKE METONGA NEWS

Volume 2020: No. 3



## What's Wrong With This Picture?

See page 4



Photo courtesy David Wojcik

## Association Update

Gary Mueller

Following the pandemic-generated complete shutdown earlier in the spring, Lake Metonga transformed into one of *the* places to be most weekends this summer and early fall. The weekend weather was excellent and the lake afforded the fresh air and social distancing so many were hungry for.

Our Crandon area businesses adapted to their customer requests by offering outdoor seating, social distancing and masking on a fairly consistent basis, as everyone increasingly seemed to take stock in the importance of shopping locally and safely.

With the weather change this fall, the boats and piers are out. And, the ATV's are in as the preferred fresh-air activity. (Leaf raking, although classified as a fresh-air activity, is still just as undesirable as ever.)

Regarding the lake itself, low water level was a concern much of the summer. But, just as the level began to normalize, we were hit with three plus inches of rain which continued the shoreline erosion issues of the spring runoff.

The lake weed beds gave up their share of perch, and didn't seem to hamper boating as they had in the past. Crab numbers were low, while bullheads were everywhere. The bullhead harvest was canceled this

*Continued on page 2...*

# Lake Metonga News

## Mueller continued...

year due to Covid. Hopefully, we can get the program going again next year.

The loon chicks seemed to have survived and there were a sizable number of successful eaglet fledglings this year. The lake did experience one serious eagle injury. Thanks to all involved in its capture and transport to the Raptor Center (see article page 4).

The Annual Meeting was well attended considering the outdoor setting and virus concerns (see article below). Thank you all for attending and Julie Janquart for the printed PowerPoint outline which helped us finish in record time without compromising detail. One highlight of the meeting was the academic scholarship presented to Kayla Reed on behalf of the Donna Schramm Memorial Fund (see page 6).

The Ten Year Lake Management plan is somewhat in limbo due to the pandemic. The latest round of DNR suggestions have been incorporated, but the program is on hold until the plan can be presented to the Association membership. Please stay tuned for details.

The Clean Boats program has wrapped up for the year. Thank you Emma Eisenschink for administering the plan and Julie Janquart for handling the DNR grant.

Hope and pray you are all healthy and enjoying the beautiful outdoor experience this area affords us.

*Gary*

## Association Annual Meeting Report

*Julie Janquart*

With an overcast sky, a *balmy* 65° temperature and a brisk 10 mph southwesterly wind with gusts up to 23 mph coming off the lake, Gary Mueller opened the slightly delayed 2020 Annual Membership Meeting at 9:07 a.m. at the outdoor City Park Pavilion on August 8, 2020.

Attendees donned with face masks and light jackets or sweatshirts, due to the atypical August weather, socially distanced from each other. As was expected, attendance was significantly lower this year comparatively to previous meetings held at Crandon High School in which the typical head count more than doubles this year's total of 34 individuals including the board members.

Attendees received three documents including a meeting agenda, 2019 Annual Meeting Minutes and an informational PowerPoint handout, all of which can be viewed or downloaded on the LMA website.

## Lake Management Committee Volunteers

As part of our association's nearly completed and DNR-approved 10-year lake management plan, we are organizing three committees that will monitor lake issues and prescribe recommendations to the board as necessary.

Each committee will be comprised of at least one representative from the association board and 6 to 8 from the membership at large. The chair of each committee will be selected from within each committee, but the chair is to be one of the general members and not a sitting board member.

Here are the volunteer members that have signed up thus far. If you'd like to help with your time and talent on one of these committees, please call Gary Mueller 715.478.2049 or email Julie Janquart at [juliejanquart@gmail.com](mailto:juliejanquart@gmail.com)

<b>Aquatic Plant &amp; Invasive Species Management</b>	<b>Fisheries &amp; Habitat</b>	<b>Outreach (Communication &amp; Membership)</b>
Gary Mueller*	Dick Klemick	Steve Parks*
Grant Reed	Kayla Reed	Mark Truymen*
?	Ed Smith	?
?	Lynn Smith*	?
?	?	?
?	?	?
?	?	?
?	?	?

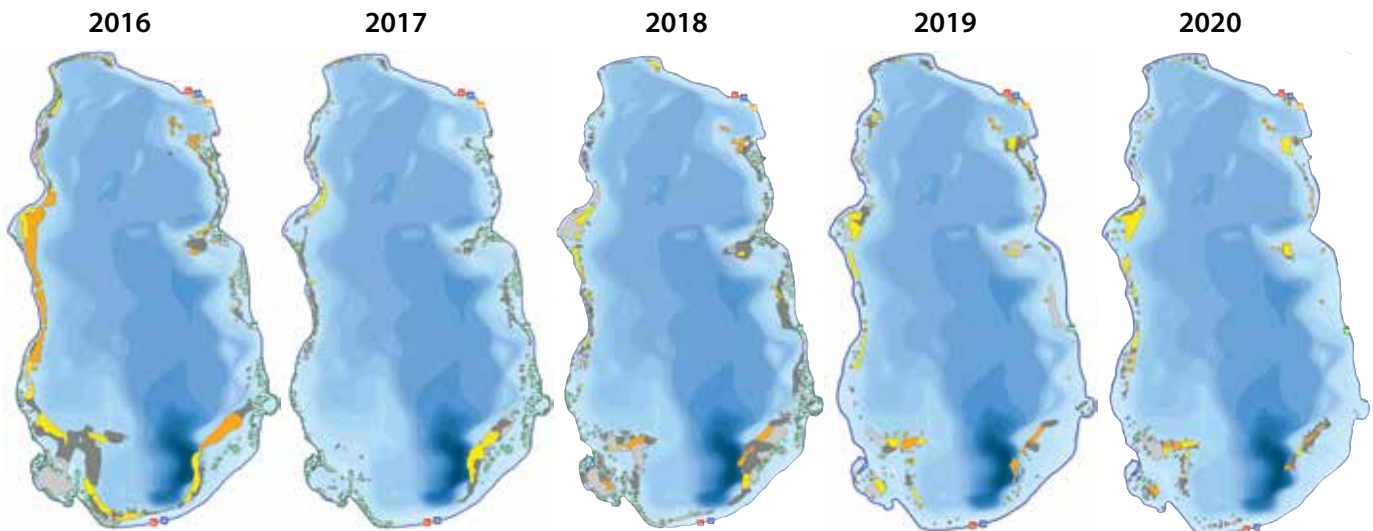
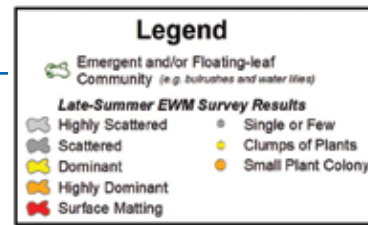
\* Association board member



*Fortunately, the City Park Pavilion is outfitted with wind break tarps that protected the membership from the harsh winds coming off the lake during the meeting.*

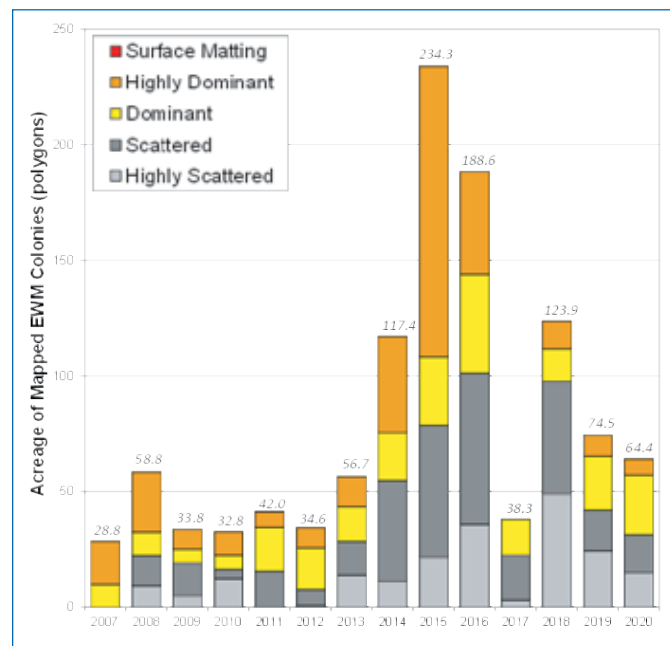
## MilFoil Mapping on Metonga

Eddie Heath, Onterra LLC



Over two days in late-September, Onterra had multiple crews out on Lake Metonga conducting the late-season Eurasian Water Milfoil (EWM) mapping survey. The crews did run into some issues with clarity caused by algae blooms, which slowed the progress. The crews supplemented the visual survey with underwater cameras and rake tows. While the survey took us a little longer than past years, we are confident with the quality of the results.

At right is a graph from the management plan, that is updated to reflect the 2020 data. Overall, the 2019 and 2020 data are very similar. There was a slight reduction in highly scattered EWM colonies that were represented in 2020 by a bunch of point-based data that do not contribute to the acreage figure. Said another way, the EWM footprint has remained largely the same from 2019-2020, but the density reduced by a small amount. Overall, the EWM population is much below historically high levels, even though herbicide management has not taken place since 2017.



## High Speed Internet on Its Way

Cables are popping up everywhere in the Lake Metonga area. This high speed fiberoptic infrastructure is being installed by Northwoods Connect out of Rhinelander. As of right now, it's still too soon to have a definitive date and cost of activation, but Northwoods will be contacting us when such information becomes available, which we will include in the next newsletter and on the website

# Lake Metonga News

## A Case of Friendly Fire on the 4th



When Dave Wojcik took a photo of an eagle sitting in a tree on the west shore of Lake Metonga in early September (page 1), he knew something was wrong. Then it fell out of the tree and onto the roof of a parked camper. Up the road, on a different day, Lynn Smith video recorded the eagle attempting to eat a fish, eventually managing to swallow it whole being unable to break it apart into smaller bites with its beak.

Fortunately, within a few days following, someone was able to capture the eagle and bring it to the raptor center, REGI, near Antigo, before it perished. According to Marge Gibson, Co-Founder and Executive Director of REGI, the eagle would have only survived another day or two.

As of November 9th, two months after her September 9th FOX 11 interview (transcript below), Marge is not as optimistic for the eagle's future; the beak does not appear to be rejuvenating sufficiently, the possibility of a prosthetic improbable, and its ultimate return to the wild unlikely.

Its fate? Most likely, he will spend at least another year at REGI in rehab, and the remaining years in some type of wildlife facility used for educational purposes. And the eagle's lifelong mate? Another unknown. We'll have an update in our next newsletter edition early 2021.

For anyone that can offer any further information about the eagle or its mate, please use the association website's Contact Us email. Also, please consider donating to REGI (see REGI Fundraising notice at right), to help offset the thousands of dollars in rehab costs for this majestic, symbolic and now-former Lake Metonga resident.

### Posted on the REGI Blog September 8, 2020

<http://www.raptoreducationgroup.org/blog>

New Bald Eagle admitted just now from Crandon, WI. A family found him after he was sitting on their lawn and taking fish from them.

This bird is emaciated. His beak is broken and he has burns on his face and body. He is also covered in feather mites from being on the ground for so long. He was likely hit with a firework back from Fourth of July.

This is one of the many reasons why fireworks are so detrimental to our wildlife. Please be responsible.



## Bald eagle, likely injured by fireworks, recovers at Wisconsin facility

*Eric Peterson, FOX 11 News Wednesday, September 9th 2020*

LANGLADE COUNTY, Wis. (WLUK) -- An American bald eagle is receiving life-saving care after it was found in the Northwoods with injuries likely from fireworks.

The Raptor Education Group near Antigo is doing the rehabilitation, and experts there say the bird is in for a long recovery.

In her decades of work with bald eagles and other birds, Marge Gibson says she's seen various fliers shot, poisoned or even hit by cars, but when this bird came in over the weekend, she says she became angry -- and disappointed.

"This is purposeful. And when you have a purposeful injury, it takes it to a new level," Gibson said. Gibson says the bird's beak is badly damaged.



For more info, go to: [www.raptoreducationgroup.org](http://www.raptoreducationgroup.org)



Raptor Education Group, Inc.

November 3 at 6:05 AM · 🌐

...

#GivingTuesday is a global day of generosity that will take place on December 1, 2020.

For 30 years the Raptor Education Group has been rehabilitating sick and injured native wild birds, as well as educating the public on wildlife through on and off site education programs.

This year, in honor of our 30 year anniversary, our goal is to get 2,020 followers and supporters to donate \$30. This money will not only help offset the financial burden this year has caused, but to ensure that we are able to continue our work for years to come. Mark your calendars and consider adding the Raptor Education Group to your list to donate to this year!



## Eagle Update

Mark Truymen

If you have been trying to view the eagle cam and not having any luck, you're not alone. We have been having trouble connecting to it since August. Hopefully, this will get resolved by the time nesting season arrives, about mid-January.

Regarding nesting, we have noticed considerable construction activity this fall that usually starts about January. We have no clue what that may mean but the nest continues to increase in size.

Also we are seeing young eagles coming to the nest and can only assume they were raised there. You may or may not be aware that there are five active nests on Lake Metonga. In speaking with property owners near these nests, we estimate that there were at least 8 eaglets hatched from those nests this year. (The young eagles are very distinguishable as they do not get their white head and tail feathers until they are 4-5 years old.)

So, if you see more eagles than you have in the past, you know that they are thriving on Lake Metonga.

**Are the eagle nests of Metonga your passion?** Join the Fisheries and Habitat committee (see page 2). Eagles, loons, shoreland preservation, as well as the Metonga fisheries are the primary focus off this newly formed committee's agenda.

Reprinted with permission **FOX 11 NEWS**

"It's both burned, and it was exploded off, because of an explosion. But the burns are pretty severe. It went into his nares, or his nose area, and also he has shrapnel in his face," she said.

Gibson says the bird was likely injured near Crandon around the Fourth of July. She suspects fireworks.

"Can you imagine sitting in a tree with your chicks as the eagle was, and having an M-80 thrown into your nest? Trying to protect your chicks, which is what he did."

Gibson says the eagle ended up on the ground. She's not sure what happened to the chicks. She says people used fish to lure the bird into a crate on Sunday. Now, staff and volunteers at the Raptor Education Group are caring for the bird around the clock. She says the beak may grow back, but it will take at least a year of care.

"This bald eagle is in his twenties, at least. Just by his feathers and his talon wear, so he's been around awhile," Gibson said. "He has a mate. They mate for life. He has been in this area for a long time."

She says the eagle started eating some solid food on Wednesday morning, and that's what she likes to see.

"We're hopeful that this fella will see the skies, the wild skies again."

The Raptor Education Group is a non-profit based in the Antigo area. It is licensed by state and federal authorities to treat these birds of prey.

**Watch the video of the eagle here:**

<https://fox11online.com/news/local/bald-eagle-likely-injured-by-fireworks-recovers-at-wisconsin-facility>

# Lake Metonga News

## Schramm Memorial Scholarship Presented at Annual Meeting

Earlier this year, the LMA board approved monies from the Donna Schramm Memorial Fund to provide a scholarship donation to Kayla Reed as she commences her college education. The scholarship donation is in recognition of Kayla's outstanding academic achievement thus far in life, and her devout environmental studies and activities including those specific to Lake Metonga including water quality studies and serving as the lake's Loon Ranger.



The \$2,000 scholarship donation was presented to Kayla by Gary Mueller, President at this year's association's annual meeting.

Dear Lake Metonga Association,  
I wanted to sincerely thank you for the \$2,000 scholarship funded by the Schramm Memorial Fund. This means so much to me! I have always enjoyed helping the lake association in any way I could, and this will not change! I am very excited to be attending the university of Wisconsin-Stevens Point in the fall of 2020 to double major in Fisheries and aquatic science and water resources, with a minor in biology and possibly GIS! While attending UWSP, I will work hard to maintain good grades and to learn, while also experiencing club activities and being involved in the LMA. After I have received my bachelor's degrees, I hope to work an LTE position for two years before returning to school to obtain my master's degree(s) in Natural Resources and/or Science. With my educational goals, this scholarship award helps alleviate and lessen my future student debt. Thank you, and I am very honored to have received this \$2,000 scholarship from the Schramm Memorial Fund through the Lake Metonga Association!  
Thank you! -Kayla Reed

## Forest County Cost-Share Program

*Excerpted from "Conservation Corner", a weekly article from Forest County Land & Water Conservation Department*

The Forest County Cost-Share Program is administered by the Forest County Land and Water Conservation Department. The Grant money is provided by the Wisconsin Dept. of Agriculture, Trade, & Consumer Protection (DATCP) to fund the program.

Under the program, the landowner pays for all project costs and is reimbursed 50% & up to 70% for eligible practices. Standards of DATCP (Chapter ATCP 50) & the Natural Resource Conservation Service (NRCS) must be followed.

### The Program allows for:

- Restoration of the buffer zone with native plants, shrubs, and trees.
- Erosion control methods such as rip rap, biologs, & other bio engineering methods (as permitted by the Wisconsin Dept. of Natural Resources (DNR).)

### The Program covers:

- Native vegetation for buffer
- Erosion control materials
- Excavation costs
- Labor for installation - costs for a contractor can be reimbursed or landowner labor (@ \$10/hr).
- Geotextile fabric

### The Program does not cover:

- Removal or installation of docks/piers.
- Removal or installation of steps, walkways, lifts, etc.
- Materials such as wood, brick, plaster, blacktop, or demolition material for rip rap use.

If you're interested in the Program, you can access an application from the Forest County Website ([www.co.forest.wi.gov](http://www.co.forest.wi.gov)) under the Land Conservation Department, by contacting the Land Conservation Dept. at (715) 478-1387, or by email: [lcc@co.forest.wi.us](mailto:lcc@co.forest.wi.us).

Once the application is received, a site visit will be done by county staff to determine eligibility and consult with the landowner(s).

---

## Lake Metonga History: Forest County Veteran's Memorial Park (South Beach)

*Continued from previous issue*

*Michelle Gobert*

Forest County's Forestry Department maintains Veterans Memorial Park, located on the south end of Lake Metonga, for both residents and visitors to the area.

Veteran's Memorial Park was authorized by action of the Forest County Board of Supervisors on August 7th, 1962. Forest County purchased the land for the park in 1959 from the State Land Commission for \$10,700 which includes 78 acres and about 1,540 feet of lake frontage. In 1962, there were "two modern rest rooms", "7,000 yards of gravel and fill", a "blacktop boat ramp and buoys around the swimming area to keep boaters away. The article goes on to say that the county board had delegated its public property committee to have charge of the operation of the park. The members of the committee were Everette Cole, William Duff and Len Staska.

Thanks to the hard work and dedication of our Forestry and Parks Department and the foresight of the 1962 County Board of Supervisors, fifty-eight years later,

Forest County's Veteran's Memorial Park continues to be a gathering place for both residents and visitors alike.



*View looking across Veteran's Memorial Park boat launch (photo courtesy Forest County Chamber Facebook page)*

---

## Habitat or Debris? You Can Help Decide

According To Greg Matzke, our Forest County Fisheries Biologist, "fish sticks" and other inserted woody habitat are for the most part put in place with the thinking that "more wood is good", and to make up for the wood cleared by riparian owners as unwanted debris.

"The downside", as Mazke hypothesizes, "is that fish stick type projects have the most benefit to the species that use that habitat to spawn, mainly the nest-building species, such as: bluegill, pumpkinseed, rock bass, largemouth bass, smallmouth bass. While other fish species will utilize the habitat for other purposes, those are the species that will use it for reproduction purposes, so I would stay away from them at this point until we understand exactly what species they benefit the most. Obviously, walleye seem to already have the appropriate habitat and can naturally reproduce well as long as bullhead numbers are low. And, perch reproduction is not limited and they likely use the vast bulrush beds for spawning. So, I would recommend caution about adding wood habitat without more definitive data."

**You can help.** Join the Fisheries & Habitat Committee (see page 2), to help evaluate this critical habitat issue for Lake Metonga.

---

## Membership Corner

*Mark Truymen*

It's already that time of year again...

With the fall, many riparian owners close down their dwellings, pack up for warmer climates or hunker down for winter. At this time, we have very little membership activity, but we are gearing up for next year.

LMA's bylaws state that membership dues are annual, so around mid-January you'll be receiving a renewal invoice. We ask that you renew promptly as to not forget, since we do not send follow-up reminders.

We also mail many area nonmembers an invitation letter in hopes that they will support the lake as you do. Our membership has been holding steady and due to the pandemic, it's been difficult to contact prospective new members.

Thank you for your continued support and hopefully we'll be back to normal next spring when the docks and lifts go back in and the lake comes back alive.

## Lake Association Contacts:

### 4th of July Boat Parade & Picnic

Gary Goeman 414-940-8873  
[garygoeman@hotmail.com](mailto:garygoeman@hotmail.com)

### Kentuck Days & Art in the Square

Deb Gauerke 715-574-9100  
[d\\_gauerke@yahoo.com](mailto:d_gauerke@yahoo.com)

### WEEDSnWALLEYES

Gary and Chris Mueller 715-478-2049  
[mueller@newnorth.net](mailto:mueller@newnorth.net)

### Membership Contacts:

Julie Janquart 920-676-5764  
[juliejanquart@gmail.com](mailto:juliejanquart@gmail.com)

### CB-CW

Emma Eisenschink 920-905-2699  
[emmaeisenschink@gmail.com](mailto:emmaeisenschink@gmail.com)

### Membership Dues/Website

Steve Parks 715-793-4103  
[steveparks1207@gmail.com](mailto:steveparks1207@gmail.com)

Lake Metonga Association  
P.O. Box 32  
Crandon, WI 54520

**It's over! Savor the colorful memory one last time while nestled by a warm fire.  
Up next: pure white... snow... cold... stoke the fire...**

