

Many hands make light work



*Volunteers from Mole Lake Fisheries
harvesting adult bullheads in Peterson Bay*

**Lake Metonga
Association**



P.O. Box 32, Crandon, Wisconsin 54520
www.lakemetongawi.org or on **facebook**

The Lake Metonga Association, founded in 1970, is a 501(c)3 nonprofit volunteer organization dedicated to preserving Lake Metonga.

The Association works with the community and property owners to:

- *Protect the aesthetic beauty, water quality, wildlife habitats and fisheries for future generations;*
- *And, in so doing, also help maintain property values for the area.*

Mission:

- To preserve, maintain and enhance the water quality, fish habitat and ecological integrity of Lake Metonga in Forest County, Wisconsin for the benefit of the general public.
- To improve the safety of boaters and other recreational uses of Lake Metonga.
- To monitor the chemical, biological, sociological status of Lake Metonga and implement management strategies to maintain and enhance the ecological integrity and recreational value of the lake and its environs.
- To educate and inform public officials, landowners and members of the general public on matters affecting the ecological integrity and recreational value of Lake Metonga and its watershed, including planning, zoning and other public policies which support appropriate and sustainable patterns of development and land use in the lake's watershed.

As incorporated with our Restated Articles of Incorporation, July 25, 1998.



Please Support the Lake Metonga Association

You do not have to be a lake property owner to be an association member.

Individual Membership (\$25) – all people that own property or who reside on or within one mile of the lake for at least one month each year can join the association as voting members. The annual membership dues cover two people from the same property – spouses, co-owners, family members... Please join the association and have a voice and a vote in preserving the value and directing the future of Lake Metonga.

Business Sponsor (\$50) – we appreciate the ongoing financial support of many area businesses. Please support these companies that are highlighted on our website sponsor's page.

Friend of Lake Metonga (\$25) – former area residents; weekend campers, boaters and fishermen; and anyone else that resides outside the voting members area are encouraged to become a Friend of Lake Metonga and help support the Association.

All supporters:

- ✓ Receive a subscription to the association newsletter (by mail or email, your choice)
- ✓ Receive eblast notifications and updates on important, late-breaking lake events and association issues (optional)

The Association is governed by a volunteer board of officers. All substantive issues are voted on by the general membership at its annual meeting.

We hope you will consider joining the Lake Metonga Association, and participating in the organization!

Lake Association Activities:

To help improve the lake's walleye and perch fishery, LMA sponsors an ongoing bullhead removal program. Since 2008, with the help of Mole Lake Fisheries, well over 50,000 adult bullheads have been harvested and donated to area raptor rehabilitation centers. In the 2021 season, we began a new volunteer program to remove bullhead minnows, with almost one million collected in the first year, and almost 2.25 million this past year.

For more info: www.lakemetongawi.org/lake-info/fishing/



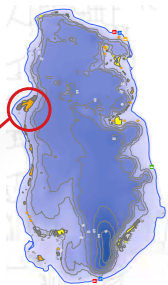
Financial Support is Crucial to Make Lake

The primary source of income to sustain our non--profit organization comes from our annual WEEDS"n"WALLEYES Banquet, an open-to-the-public fun evening with raffles, auctions and entertainment. The date for our 2023 event isn't set yet, but please be on the lookout to mark your calendars for the date in **early October!**

Additionally, we rely on the generous donations from our members, friends of the lake, area businesses, municipalities, and tribal communities, as well as Wisconsin DNR grants for lake management studies, Clean Boats-Clean Waters, and lake treatment programs.

In 2022, LMA treated several acres of invasive milfoil threatening Strawberry Bay.

We thank all those who helped with LMA fundraising efforts and those who donated to the association to cover this \$40,000 cost for treatment.



Other activities:

- Organize and operate the Clean Boats-Clean Waters program to inspect boats and educate boaters about the spread of milfoil and other invasives in Wisconsin waters.
- Provide information to the community and interested parties through facebook (you don't need to join facebook to view), our newsletter, website, booths at area events, etc.
- Perform regular water quality studies
- Develop and implement a lake management plan incorporating fish & marine animal populations, water quality, control of invasives, shoreland conditions and habitat, watershed impacts, and more...
- Sponsor the 4th of July picnic, boat parade, and other social events for the association and surrounding lake area community

Association Activities Possible

The association also generates revenue at our annual 4th of July Picnic and the sale of Lake Metonga apparel, which is available at Charlie's Lake Metonga Resort, Tamarack Outfitters (formerly Smith Sport and Hobby), and all Lake Metonga Association events including Kentuck Day and Art in the Square.

Most importantly, the Association is sustained by its membership through their basic \$25 membership fee, but most importantly by their participation in LMA activities with their donation of time and talent.

***Please consider joining us
if you are not a member already.***

Ongoing Lake Metonga Association Activities:

- Harvest nuisance bullheads
- Treat EWM (Eurasian water milfoil)
- Manage a Clean Boats/Clean Waters program
- Sponsor 4th of July Boat Parade Contest and community-wide picnic
- Offer live camera feeds of an eagle nest and other spots around the lake (see website)
- Help with improvements to both north and south beach parks
- Provide and maintain loon nesting platforms
- Perform annual lake habitat and water quality studies
- Implement and maintain fisheries, aquatic plants, invasive species control, shoreland restoration and other lake management activities in accordance with our 10-year lake management plan's objectives and goals. This plan was developed recently with input from most lake area residents and our lake consultant, Onterra LLC, and with the approval of the DNR. For more about the 10-year plan, feel free to view it on line or print it from our website at:

www.lakemetongawi.org/lake-info/fishing



Please contact us for more information and to keep informed on lake and association activities

**See us on facebook
or our website:
www.lakemetongawi.org**

